

BIOMETRIC BASED BORDER CONTROL SYSTEM FOR IMMIGRATION AND BORDER CONTROL

CASE STUDY

Security Enhanced
and Fraud Eliminated
through Biometric based
Integrated Border Control
System



8449
Border Force



Customer Profile

The Department of Immigration (DOI) falls under the Malawi Ministry of Internal Affairs and Public security, and it is basically in existence to provide quality services to the general public in areas of border control and issuance of travel documents, residential and work permits, Visas as well as Citizenship to eligible persons.

Business Situation

The Department of Immigration is having its operations across the country borders which covers different mode of transportation (Airport / Road/Rail/Port). To meet its operational objectives, DOI has taken a conscious decision to upgrading its present manual system of Border Control System to a computerized Integrated Border Control System.

Solution

Techno Brain's biometric based Integrated Border Control System (IBCS) provides the Tourists / Residents / Citizens / Asylum seekers verification of documents like Passport, Visa, Driving Licenses, ID Cards and Finger Prints and photographs at the Border Check posts. Systems scan his / her documents and checks with the database and give the alert to the Checking authorities. System also checks the most wanted / criminal records. And the system generates the MIS Reports like present visitors list in the country and their visit expiry dates etc.

Major features of Integrated Border Control System:

- Automatic acquisition of traveler's data and verification of the travel documents (passports, Visas, Driving License etc.) and Security Features
- Capturing of traveler biometrics (i.e. fingerprint (4+4+2) and photograph) and Verifying of traveler biometrics
- Checking with the Wanted list /Stop list /Prohibited immigrants / Repatriation List etc.
- Capturing of Entry / Exit / Refused Entry / Refused Exit Information
- Secondary Level (Supervisory Role) Inspection for verification failed Immigrants
- Capturing the carrier information (Flights, Vehicles etc.)
- Automatic Pop up's / Alerts during the verification process
- Customized MIS report and dashboards

Quick Sheet

Customer:

Malawi Department of Immigration (DOI) falls under the Ministry of Internal Affairs and Public security, and it is basically in existence to provide quality services to the general public in areas of border control and issuance of travel documents, residential and work permits, Visas as well as Citizenship to eligible persons.

Industry:

Public

Business Situation:

DOI Malawi was looking for a solution to combat the porosity of their border posts in terms of traveler verification (validity of their travel documents and identity) at the same time be able to track the travelers that have come into and gone out of the country.

Solution:

DOI implemented IBCS systems which has enhanced their border post operations and efficiency.

Benefits:

- Automated travel document verification
- Visa and Permit verification
- Biometrics Identity verification



Technologies

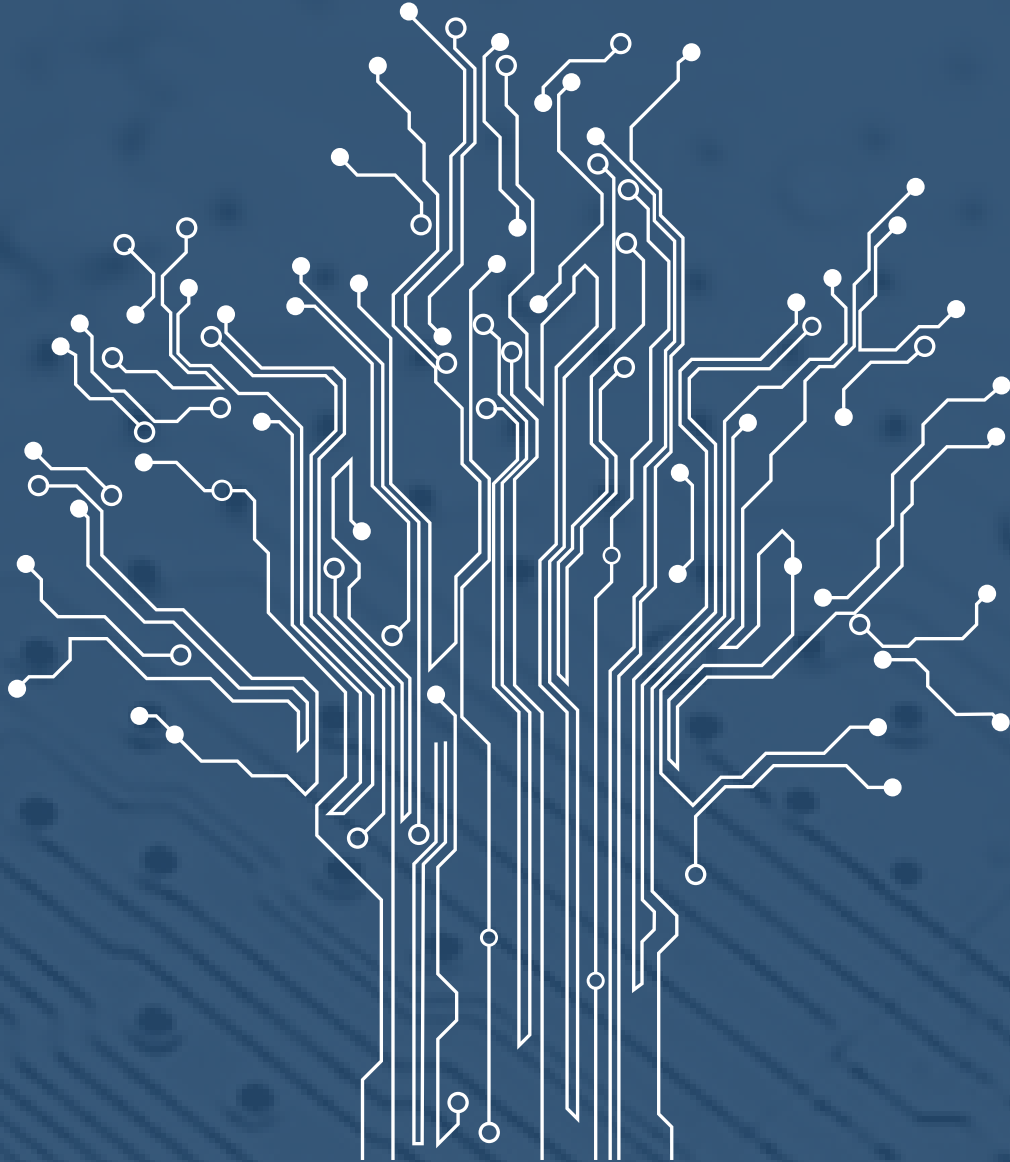
MS .Net 3.5 Framework (Programming), IIS 6.0 (Web Server), MS SQL Server Enterprise Edition 2008 R2 (Database), Microsoft .Net Visual Studio 2010 (Development Environment), Mega Matcher (Fingerprint Search Engine), ICAO travel document Database (for verifying travel documents)

Benefits

IBCS system is addressing day to day border operations with live information across the borders. With this system DOI Officers in all borders and various administration offices are able to monitor current movement of immigrants and it is facilitating to take necessary actions instantaneously without any further delays in the border operations.

Key benefits of IBCS system:

- DOI is able to overcome human limitations in validating the travel documents and their travel history
- DOI is able to verify international travel documents with travelers documents with highest level of document validation through multiple security checks and evaluate the fake documents
- DOI is able to clear the passengers without any delays in this automated process and its required minimal supervision
- DOI is able to check immigrants' admissibility to the country against check lists databases" and able to restrict unwanted persons in the country
- DOI is able to quickly share fraud attempts among all the National borders
- DOI is able to avoid paper work from their day to day operations
- DOI is able perform their back-office works in automatic workflows



GLOBAL PRESENCE

Botswana | Ethiopia | Ghana | India | Kenya | Lesotho | Liberia | Malawi | Namibia | Rwanda | Sierra Leone | South Africa | Swaziland | Tanzania | UAE | Uganda | UK | USA | Zambia | Zimbabwe

Email: info@technobraingroup.com
Website: www.technobraingroup.com